



JUMP AUGER

**Owner / Operator Manual
& Parts Book**

701 Lenham Ave. - P.O. Box 647 – Cooperstown, ND 58425
(701) 797-2700 – Fax (701) 797-2584 – www.sheyennemfg.com

This Manual Includes the Following Sizes of Jump Augers

Each With Electric or Hydraulic Drive Options

8"

10"

13"

ATTENTION DEALER

Be sure the OWNERS MANUAL remains with the auger when sold. It contains important procedures for safe operation of the auger.

SERIAL NUMBER LOCATION

Always give your dealer the serial number of your Sheyenne/Westgo Jump Auger when ordering parts, requesting service or for information.

The serial number plate is located where indicated. Please mark this number and other information in the spaces provided below and on the warranty pages. It will be useful for future reference.



Model Number _____

Serial Number _____

Production Year _____

Please enter information below and **SAVE FOR FUTURE REFERENCE**

AUGER WARRANTY

SHEYENNE TOOLING & MANUFACTURING warrants each new product to be free from defects in material and workmanship. This warranty is applicable only for the normal service life expectancy of the machine or components, not to exceed **twelve consecutive months** from the date of delivery of the new SHEYENNE TOOLING & MANUFACTURING product to the original purchaser.

Genuine SHEYENNE TOOLING & MANUFACTURING replacement parts and components will be warranted for 90 days from date of purchase, or the remainder of the original equipment warranty period, whichever is longer.

Under no circumstances will it cover any merchandise or components thereof, which in the opinion of the company, has been subject to negligent handling, misuse, alteration, an accident, or if repairs have been made with parts other than those obtainable through SHEYENNE TOOLING & MANUFACTURING.

Our obligation under this warranty shall be limited to repairing or replacing, free of charge to the original purchaser, any part that in our judgment shall show evidence of such defect, provided further that such part shall be returned within thirty (30) days from date of failure to SHEYENNE TOOLING & MANUFACTURING.

This warranty shall not be interpreted to render us liable for injury or damages of any kind or nature to person or property.

Except as set forth above, **SHEYENNE TOOLING & MANUFACTURING shall have no obligation of liability of any kind on account of any of its equipment and shall not be liable for special or consequential damage. SHEYENNE TOOLING & MANUFACTURING makes no other warranty, express or implied, and, specifically, SHEYENNE TOOLING & MANUFACTURING disclaims any implied warranty of merchantability of fitness for a particular purpose. Some states or provinces do not permit limitations or exclusions of implied warranties of incidental or consequential damages, so the limitations or exclusions in this warranty may not apply.**

This warranty is subject to any existing conditions of supply, which may directly affect our ability to obtain materials or manufacture replacement parts.

SHEYENNE TOOLING & MANUFACTURING reserves the right to make improvements in design or changes in specifications at any time, without incurring any obligations to owners of units previously sold.

No one is authorized to alter, modify or enlarge neither this warranty nor the exclusions, limitations and reservations.

I have read and understand the above instructions and warranty. **Warranty is invalid until all three copies are completed and signed. Customer copy retained, dealer copy in dealer's possession and manufacturer's copy returned.**

Date Purchased _____

Dealership _____

Model Number _____

Serial Number _____

Customer Signature _____

Date _____

Dealer Signature _____

Date _____

Customer Copy

(Keep in this book)

Please enter information below and **SAVE FOR FUTURE REFERENCE**

AUGER WARRANTY

SHEYENNE TOOLING & MANUFACTURING warrants each new product to be free from defects in material and workmanship. This warranty is applicable only for the normal service life expectancy of the machine or components, not to exceed **twelve consecutive months** from the date of delivery of the new SHEYENNE TOOLING & MANUFACTURING product to the original purchaser.

Genuine SHEYENNE TOOLING & MANUFACTURING replacement parts and components will be warranted for 90 days from date of purchase, or the remainder of the original equipment warranty period, whichever is longer.

Under no circumstances will it cover any merchandise or components thereof, which in the opinion of the company, has been subject to negligent handling, misuse, alteration, an accident, or if repairs have been made with parts other than those obtainable through SHEYENNE TOOLING & MANUFACTURING.

Our obligation under this warranty shall be limited to repairing or replacing, free of charge to the original purchaser, any part that in our judgment shall show evidence of such defect, provided further that such part shall be returned within thirty (30) days from date of failure to SHEYENNE TOOLING & MANUFACTURING.

This warranty shall not be interpreted to render us liable for injury or damages of any kind or nature to person or property.

Except as set forth above, **SHEYENNE TOOLING & MANUFACTURING shall have no obligation of liability of any kind on account of any of its equipment and shall not be liable for special or consequential damage. SHEYENNE TOOLING & MANUFACTURING makes no other warranty, express or implied, and, specifically, SHEYENNE TOOLING & MANUFACTURING disclaims any implied warranty of merchantability of fitness for a particular purpose. Some states or provinces do not permit limitations or exclusions of implied warranties of incidental or consequential damages, so the limitations or exclusions in this warranty may not apply.**

This warranty is subject to any existing conditions of supply, which may directly affect our ability to obtain materials or manufacture replacement parts.

SHEYENNE TOOLING & MANUFACTURING reserves the right to make improvements in design or changes in specifications at any time, without incurring any obligations to owners of units previously sold.

No one is authorized to alter, modify or enlarge neither this warranty nor the exclusions, limitations and reservations.

I have read and understand the above instructions and warranty. **Warranty is invalid until all three copies are completed and signed. Customer copy retained, dealer copy in dealer's possession and manufacturer's copy returned.**

Date Purchased _____

Dealership _____

Model Number _____

Serial Number _____

Customer Signature _____

Date _____

Dealer Signature _____

Date _____

Dealer Copy



Manufacturer Copy

PLEASE ENTER INFORMATION BELOW AND RETURN TO SHEYENNE TOOLING AND MANUFACTURING

AUGER WARRANTY

SHEYENNE TOOLING & MANUFACTURING warrants each new product to be free from defects in material and workmanship. This warranty is applicable only for the normal service life expectancy of the machine or components, not to exceed twelve consecutive months from the date of delivery of the new SHEYENNE TOOLING & MANUFACTURING product to the original purchaser.

Genuine SHEYENNE TOOLING & MANUFACTURING replacement parts and components will be warranted for 90 days from date of purchase, or the remainder of the original equipment warranty period, whichever is longer. Warranty is not applicable for normal wear and usage.

Under no circumstances will it cover any merchandise or components thereof, which in the opinion of the company, has been subject to negligent handling, misuse, alteration, an accident, or if repairs have been made with parts other than those obtainable through SHEYENNE TOOLING & MANUFACTURING.

Our obligation under this warranty shall be limited to repairing or replacing, free of charge to the original purchaser, any part that in our judgement shall show evidence of such defect, provided further that such part shall be returned within thirty (30) days from date of failure to SHEYENNE TOOLING & MANUFACTURING.

This warranty shall not be interpreted to render us liable for injury or damages of any kind or nature to person or property.

Except as set forth above, SHEYENNE TOOLING & MANUFACTURING shall have no obligation of liability of any kind on account of any of its equipment and shall not be liable for special or consequential damage. SHEYENNE TOOLING & MANUFACTURING makes no other warranty, express or implied, and, specifically, SHEYENNE TOOLING & MANUFACTURING disclaims any implied warranty of merchantability of fitness for a particular purpose. Some states or provinces do not permit limitations or exclusions of implied warranties of incidental or consequential damages, so the limitations or exclusions in this warranty may not apply.

This warranty is subject to any existing conditions of supply, which may directly affect our ability to obtain materials or manufacture replacement parts.

SHEYENNE TOOLING & MANUFACTURING reserves the right to make improvements in design or changes in specifications at any time, without incurring any obligations to owners of units previously sold.

No one is authorized to alter, modify or enlarge neither this warranty nor the exclusions, limitations and reservations.

I have read and understand the above instructions and warranty. I have also read the owner's manual and understand all safety precautions. **Warranty is invalid until all three copies are completed and signed. Customer copy retained, dealer copy in the dealer's possession and the manufacturer's copy returned.**

Date Purchased _____ Dealership _____

Model Number _____ Serial Number _____

Customer Information: Name (Please Print) _____

Address _____

City _____, State _____, Zip Code _____

E-Mail (If Applicable) _____

Signature _____, Date _____

Dealer Signature _____ Date _____

Please return via; fax, regular mail or e-mail; to:
fax number – (701) 797-2584
address --
Sheyenne Tooling and Manufacturing
PO Box 647
Cooperstown, ND 58425
e-mail – warranty@sheyennemfg.com

TABLE OF CONTENTS

SECTION(S)	DESCRIPTION	PAGE
	Six Jump Auger Options	-
	Dealer Information	1
	Serial Number Location	2
	Warranty Pages	-
	Table of Contents	3
1	Introduction	4
	Safety Symbol	5
2	Safety Reasons	6
2.1, 2.2	General Safety	7
2.3	Safe Operating	8
2.4, 3, 3.1	Hydraulic Safety & Safety Decals	9
3.2, 4, 4.1	Safety Decal Locations & New Operator	10
4.2, 4.3, 4.4	Machine Break-in, Checklist, Storage	11
5, 6	Dimensions, Bolt Torque	12
7	Assembly, Assy Steps, Caddy Bracket Location	13 -17
	Hydraulic Motor Mount Assembly	18
	Electric Motor Mount Assembly	19
	Jump Auger Mount on Host Auger	20
	Parts Section Table of Contents	21
	Index	31 - 33

1 INTRODUCTION

Congratulations on your choice of a Sheyenne/Westgo Jump Auger to complement your farming operation. It has been designed and manufactured to meet the needs of a discerning Agricultural industry for the efficient moving of grain.

Safe, efficient and trouble free operation of your Jump Auger requires that you and anyone else who will be operating or maintaining the Auger, read and understand the Safety, Operation and Maintenance information contained within the Operators Manual.



This manual covers the 8, 10 and 13 inch diameter Jump Augers. Differences are covered and explained where appropriate. Use the Table of Contents as a guide to locate required information.

Keep this manual handy for frequent reference and to pass on to new operators or owners. Call your Sheyenne Dealer if you need assistance, information, or to obtain additional copies of the manuals.

OPERATOR ORIENTATION - The directions left, right, front and rear, as mentioned throughout the manual, are as standing at the rear end of the hopper facing the incline auger. The left and right side will be the same as your left hand and right hand.

**THE SYMBOL SHOWN BELOW IS USED TO
CALL YOUR ATTENTION TO INSTRUCTIONS
CONCERNING YOUR PERSONAL SAFETY**



BE ALERT!

Your Safety is involved

2 SAFETY

SAFETY ALERT SYMBOL



Why is SAFETY so important to you?

3 Big Reasons

Accidents Can Be Avoided

Accidents Disable And Kill

Accidents Are Costly

This safety alert symbol appears in this manual and on some of the decals on the Jump Auger. It is used to draw your attention to the possibility of personal injury or loss of life. We **urge** you to follow all safety instructions. Be alert to safety issues at **all** times!

In addition you will see the use of **signal words** with the safety messages. The appropriate signal word for each message has been selected using the following guide-lines:



DANGER: Indicates an immediate hazardous situation which, if not avoided, will result in death or serious injury.



WARNING: Indicates a potentially hazardous situation which, if not avoided, could result in death or serious injury.



CAUTION: Indicates a potentially hazardous situation which, if not avoided, may result in minor or moderate injury.

IMPORTANT: Indicates that equipment or property damage could result if instructions are not followed.

NOTE: Gives helpful information.

The Jump Auger is designed to give safe, dependable service if operated and maintained according to instructions. Read and understand this manual before operating. It is the owner's responsibility to be certain anyone operating this product reads this manual, and other applicable manuals to become familiar with this equipment and all safety precautions. Failure to do so could result in serious personal injury or equipment damage. If you have any questions, consult your dealer.

2.1 SAFETY

YOU are responsible for the safe operation and maintenance of your Sheyenne/Westgo Jump Auger. YOU must ensure that you and anyone else who is going to operate, maintain or work around the Auger be familiar with the operating and maintenance procedures and related Safety information contained in this manual. This manual will take you step-by-step through your working day and alerts you to all good safety practices that should be adhered to while operating the Auger.

Remember, YOU are the key to safety. Good safety practices not only protect you but also the people around you. Make these practices a working part of your safety program. Be certain that EVERYONE operating this equipment is familiar with the recommended operating and maintenance procedures and follows all the safety precautions. Most accidents can be prevented. Do not risk injury or death by ignoring good safety practices.

* Auger owners must give operating instructions to operators or employees before allowing them to operate the Auger, and at least annually thereafter per OSHA (Occupational Safety and Health Administration) regulation 1928.57.

* The most important safety device on this equipment is a safe operator. It is the operators responsibility to read and understand All Safety \ and Operating instructions in the manual and to follow them. All accidents can be avoided.

* A person who has not read and understood all operating and safety instructions is not qualified to operate the machine. An untrained operator exposes himself and bystanders to possible serious injury or death.

* Do not modify the equipment in any way. Unauthorized modification may impair the function and/or safety and could affect the life of the equipment.

* Think SAFETY! Work SAFELY!

2.2 GENERAL SAFETY

1. Read and understand the Operator's Manual before operating, maintaining or adjusting the Auger.



2. Only trained competent persons shall operate the Auger. An untrained operator is not qualified to operate this machine.

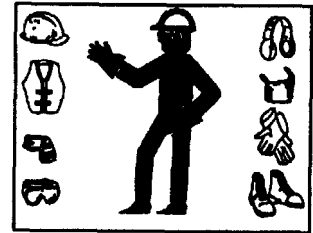
3. Have a first-aid kit available for use should the need arise and know how to use it.



4. Do not allow children, spectators or bystanders within hazard area of machine.

5. Wear appropriate protective gear. This list includes but is not limited to:

- A hard hat,
- Protective shoes with slip resistant soles
- Protective goggles
- Heavy gloves
- Hearing protection
- Respirator or filter mask



6. Stop the engine, place all controls in neutral, set park brake, remove ignition key and wait for all moving parts to stop before servicing, adjusting, repairing, or unplugging.

7. Clear the area of people, especially small children, before starting the unit.

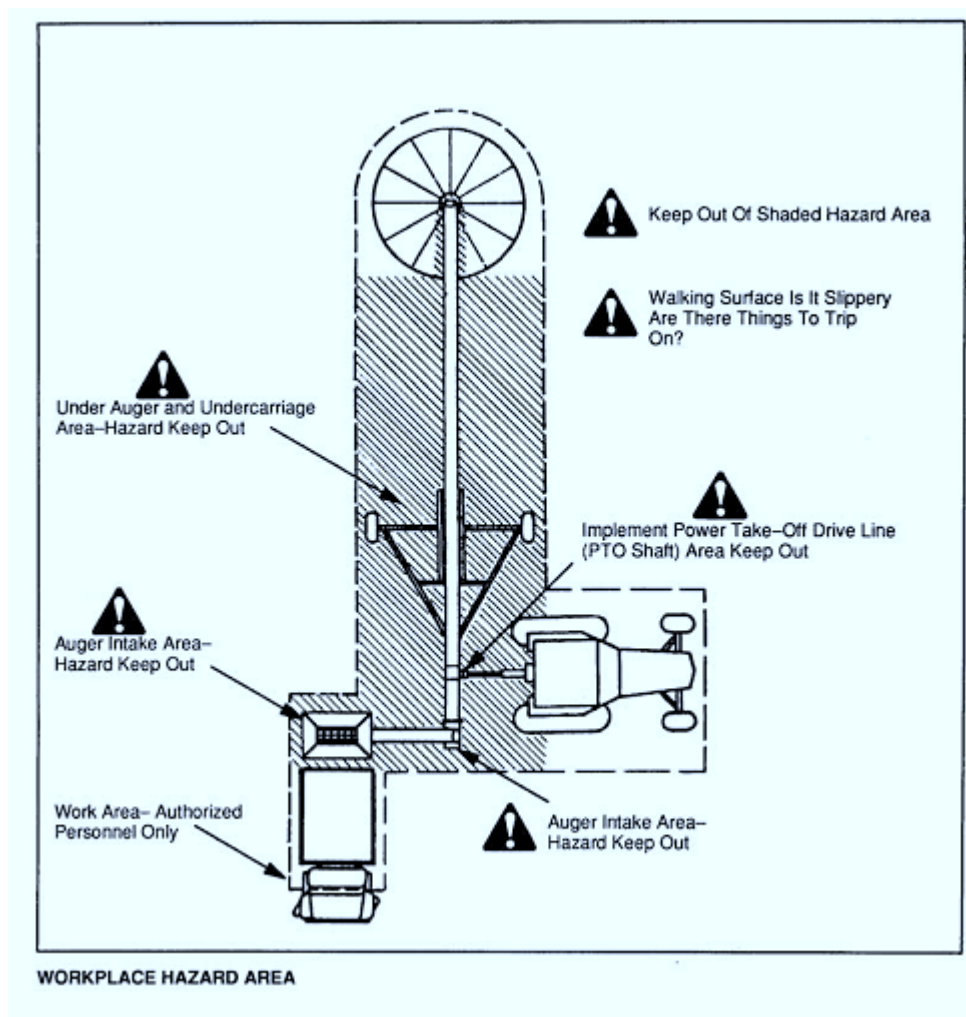
8. Review safety related items annually with all personnel who will be operating or maintaining the auger.

2.3 SAFE OPERATING

1. Read and understand the Operator's Manual and all safety signs before using.
2. Stop the engine, disconnect power source and wait for all moving parts to stop before servicing, adjusting, repairing or unplugging.
3. Clear the area of all bystanders, especially children, before starting.
4. Be familiar with the machine hazard area. If anyone enters hazard area, shut down the

machine immediately. Clear the area before restarting.

5. Keep hands, feet, hair and clothing away from all moving and/or rotating parts.
6. Do not operate machine when any guards are removed.
7. Do not operate unless the flinging guard is installed and secured.

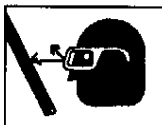


2.4 HYDRAULIC SAFETY

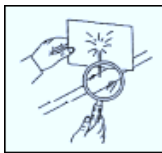
1. Always place all tractor hydraulic controls in neutral before disconnecting from tractor or working on hydraulic system.
2. Make sure that all components in the hydraulic system are kept in good condition and are clean.
3. Replace any worn, cut, abraded, flattened or crimped hoses.
4. Do not attempt any makeshift repairs to the hydraulic fittings or hoses by using tape, clamps or cements. The hydraulic system operates under extremely high-pressure. Such repairs will fail suddenly and create a hazardous and unsafe condition.



5. **WARNING:** Wear proper hand and eye protection when searching for high-pressure hydraulic leak.



Use a piece of paper, or cardboard, or wood as a backstop instead of hands to isolate and identify a leak.



6. If injured by a concentrated high-pressure stream of hydraulic oil, seek medical attention **immediately**. Serious infection or toxic reaction can develop from hydraulic fluid piercing the skin surface.
7. Before applying pressure to a hydraulic system, make sure all components are tight and that hoses and couplings are in good condition.
8. Stop engine and relieve pressure from hydraulic circuit before servicing or disconnecting from tractor. Tighten all connections before starting engine or pressurizing lines.

4 SAFETY DECALS

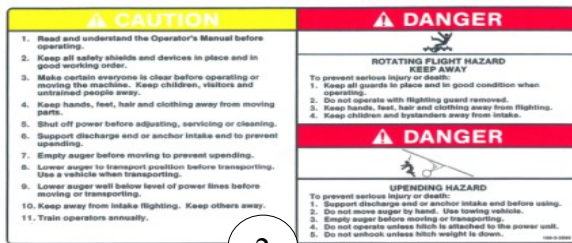
1. Keep safety decals and signs clean and legible at all times.
2. Replace safety decals that displayed a safety sign that are missing or have become illegible.
3. Replaced parts that displayed a safety sign should also display the current sign.
4. Safety decals or signs are available from your Dealers Parts Department or the factory.

4.1 How To Install Safety Decals

1. Be sure that the installation area is clean and dry.
2. Decide on the exact position before you remove the backing paper.
3. Remove the smallest portion of the split backing paper.
4. Align the decal over the specified area and carefully press the small portion with the exposed sticky backing in place.
5. Slowly peel back the remaining paper and carefully smooth the remaining portion of the decal in place.
6. Small air pockets can be pierced with a pin and smoothed out using the piece of decal backing paper.

3.2 SAFETY DECAL LOCATIONS

The types of decals and locations on the equipment are shown in the illustration below. Good safety requires that you familiarize yourself with the various Safety Decals, the type of warning and the area, or particular function related to that area, that requires your SAFETY AWARENESS.



Item	Qty	Part No.	Description
1	2	300-3-1103	Decal,Sheyenne-Logo
2	1	100-3-3593	Decal,Caution-Danger
3	1	100-3-1367	Decal,Guard-Safety

Think Safety! Work Safely!

REMEMBER – If Safety Decals have been damaged, removed, become illegible or parts replaced without decals, new decals must be applied. New decals are available from your authorized dealer.

4 OPERATION

⚠ OPERATING SAFETY

1. Read and understand the Operator's Manual and all safety signs before using.
2. Stop the engine, disconnect power source and wait for all moving parts to stop before servicing, adjusting, repairing or unplugging.
3. Clear the area of all bystanders, especially children, before starting.
4. Be familiar with machine hazard area. If anyone enters hazard area, shut down machine immediately. Clear the area before restarting.
5. Keep hands, feet, hair and clothing away from all moving and/or rotating parts.
6. Do not operate machine when any guards are removed.
7. Do not operate unless the flying guard is installed and secure.

4.1 TO THE NEW OPERATOR OR OWNER

The Sheyenne/Westgo Jump Auger is designed to efficiently move grain from a truck, trailer, or gravity wagon into an auger. Power is provided by a tractor hydraulics or electric motor. Be familiar with the machine before starting.

It is the responsibility of the owner or operator to read this manual and to train all other operators before they start working with machine. Follow all safety instructions exactly. Safety is every ones business. By following recommended procedures, a safe working environment is provided for the operator, bystanders and the area around the work-site. Untrained operators are not qualified to operate the machine.

Many features incorporated into this machine are the result of suggestions made by customers like you. Read this manual carefully to learn how to operate the machine safely and how to set it to provide maximum efficiency. By following the operating instructions in conjunction with a good maintenance program, your Auger will provide many years of trouble-free service.

4.2 MACHINE BREAK-IN

Although there are no operational restrictions on the auger when used for the first time, it is recommended that the following mechanical items be checked:

1. Check fasteners and hardware for proper torque.
2. Check hose routing for pinching or crimping. Re-align as required.
3. Check that all safety decals are installed and legible. Apply new decals if required.
4. Check that all guards are installed and working as intended.

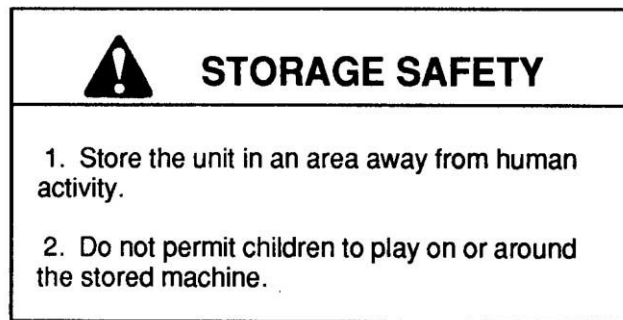
4.3 PRE-OPERATION CHECKLIST

Efficient and safe operation of the Sheyenne/Westgo Jump Auger requires that each operator reads and understands the operating procedures and all related safety precautions outlined in this section. A pre-operation checklist is provided for the operator. It is important for both the personal safety and maintaining the good mechanical condition of the Auger that this checklist is followed.

Before operating the Auger and each time thereafter, the following area should be checked off:

1. Check that all guards are installed, secured and functioning as intended. Do not operate with missing or damaged shields.
2. Check work site. Clean up working area to prevent slipping or tripping.
3. Clear the area of bystanders, especially small children, before starting.
4. Review the workplace hazards drawing and use extra care when inside the hazard area. Keep all spectators and bystanders out of this area. Should anyone enter this area, stop the machine immediately.

4.5 STORAGE



After the season's use, the machine should be thoroughly inspected and prepared for storage. Repair or replace any worn or damaged components to prevent any unnecessary downtime at the start of the next season. To insure a long, trouble free life, this procedure should be followed when preparing the unit for storage:

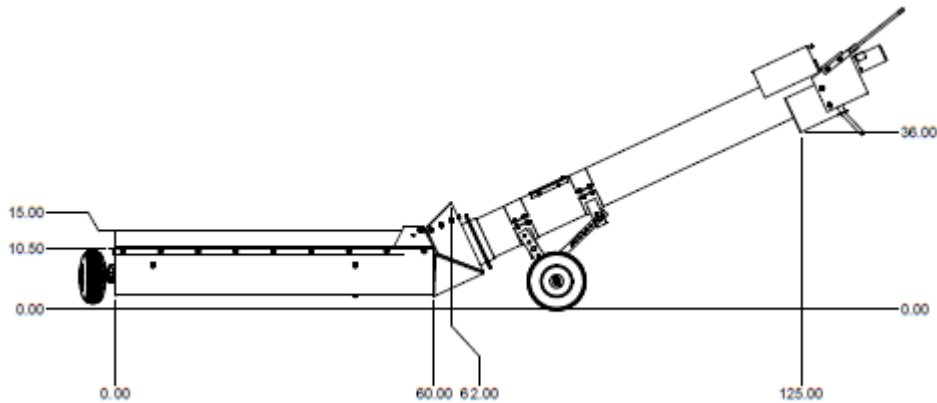
1. Wash the entire machine thoroughly using a water hose or pressure washer to remove all dirt, mud, debris or residue.
2. Inspect all moving or rotating parts to see if anything has become entangled in them. Remove the entangled material.
3. Inspect all hydraulic hoses, fittings, lines, couplers and valves. Tighten any loose fittings. Replace any hose that is badly cut, nicked or abraded or is separating from the crimped end of the fitting.
4. Touch up all paint nicks and scratches to prevent rusting.
5. Select an area that is dry, level and free of debris.

5 DIMENSIONS

Width of Hopper = 34"

8 Inch Jump Auger with Hydraulic Motor Drive Shown

The two dimensions at the outlet end vary relative to the adjusts made with caddy clamp positions on the tube and choice of holes used on the caddy arms or adjustment bars.



6 BOLT TORQUE

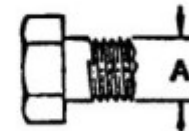
CHECKING BOLT TORQUE

The tables shown below give correct torque values for various bolts and capscrews. Tighten all bolts to the torques specified in chart unless otherwise noted. Check tightness of bolts periodically, using bolt torque chart as a guide. Replace hardware with the same strength bolt.

ENGLISH TORQUE SPECIFICATIONS

Bolt Diameter	Bolt Torque SAE5 lb-ft
1/4"	9
5/16"	19
3/8"	33
7/16"	53
1/2"	80
9/16"	115
5/8"	160
3/4"	290
7/8"	420
1"	630

SAE-5



Torque figures indicated above are valid for non-greased or non-oiled threads and heads unless otherwise specified. Therefore, do not grease or oil bolts or capscrews unless otherwise specified in this manual. When using locking elements, increase torque values by 5%.

7 ASSEMBLY

Jump Auger Delivery Inspection

Jump Augers are shipped disassembled. When you receive shipment, examine the unit carefully for hidden damage. Check and compare the parts, bundles and/or cartons to the packing list to identify any shortage before assembly. If parts shortage is noted, contact Sheyenne/Westgo immediately.

Claims for shipping damage or shortage should be filed with the contract carrier immediately.

Jump Auger Assembly Site

Select an assembly area that is clean and level with a firm dry surface. The area must be large enough to safely move around and accommodate the machine when fully assembled.

Jump Auger Orientation

Throughout these step by step assembly instructions, reference may be made for machine left hand or right hand side and front or rear. Directions left, right, front, or rear will be you are standing at the rear end of the hopper facing the incline auger. The left hand and right hand side will be the same as your left hand and right hand.



JUMP AUGER ASSEMBLY SAFETY RULES

THIS SAFETY ALERT SYMBOL INDICATES IMPORTANT MESSAGES IN THIS MANUAL. WHEN YOU SEE THIS SYMBOL, CAREFULLY READ AND UNDERSTAND THE MESSAGE THAT FOLLOWS AND BE ALERT TO THE POSSIBILITY OF PERSONAL INJURY OR DEATH.

Sheyenne/Westgo cannot anticipate every possible circumstance that might involve potential hazard. The warnings, cautions and safety suggestions in this manual are therefore not all inclusive. YOU are responsible for the safe assembly of the jump auger. You must ensure that you and other persons that are going to work around the auger be familiar with generally accepted safe shop practices and related safety information contained in this assembly manual.

Be sure that everyone involved in assembling this unit is familiar with generally accepted and recommended shop work procedures and follows all safety precautions. A person who has not read and understand the assembly and safety instructions contained in this manual is not qualified to assemble the machine.

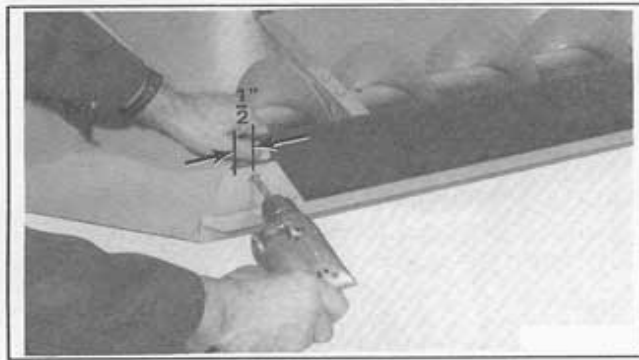
1. Read and understand the assembly instructions and all safety messages before assembly of the unit.
2. **DO NOT** modify the equipment or substitute parts in any way. Unauthorized modification may impair the function and/or safety of the machine.
3. **DO NOT** allow children or other unauthorized persons within the assembly area.
4. To avoid personal injury, use suitable lifting devices for components weighing more than 70 pounds.
5. Wear appropriate protective work gear, including, but not limited to: hard hat, protective shoes with slip resistant soles, protective eye wear and heavy work gloves.
6. Avoid personal injury or death from falling objects. When using hydraulic or pneumatic lifting devices for lifting and/or support during assembly, always use ram stops or line locks on the lifting equipment, or use other means of added support in case of failure or accidental release.
7. Always inspect lifting chains and/or slings for damage or wear. Use only chains and/or slings that are in good condition and rated for the intended load. To ignore this warning could result in personal injury or death.

Step 1



Subassemble the hopper by inserting the rubber flap into the slot in the sides and around the front of the hopper. Be sure that the rubber belt is to the inside edge of the front mounting plate.

Step 2



Position the rubber flap so that the end extends at least 1/2 inch beyond the center of the hole in the front mounting plate. Use a drill and 3/8 inch drill bit to drill the first hole in the rubber flap. Install a 3/8 x 1 inch serrated flange bolt and nut through the hole to maintain the rubber flap location.

Step 3



Starting with the first bolt, hold the rubber flap in position and match drill the rubber flap with

the existing hopper flap mounting holes. Install a 3/8 x 1 inch serrated flange bolt and nut as each hole is drilled around the sides and front of the hopper. Trim the rubber flap to 1/2 inch from the center line of the last mounting hole. Tighten all fasteners.

Step 4



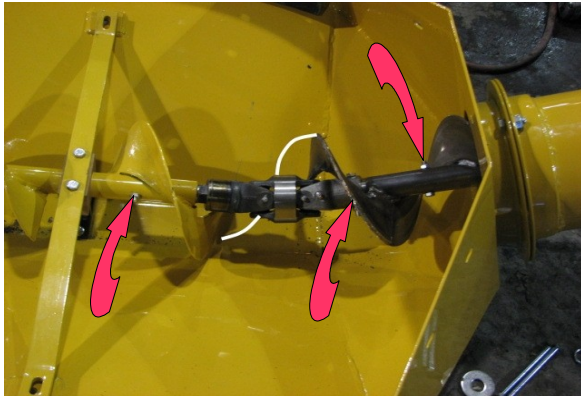
Support the rear end of the hopper assembly (about 24 inches high) on jack stands so the the auger opening is perpendicular to the floor or work surface.

Step 5



Position the inclined auger tube to the hopper and prepare to align the double universal joint with the hex shaft of the hopper's auger as indicated by the white arrow. (Cont. on next page)

Step 6



“Timing” the two flighting sections is very **important!** The flow of grain needs to travel across the gap were the U joint is and be picked up by the inclined flighting. The grain needs to be delivered **ahead** of the inclined flighting, **not behind** it! The hexagon shaft gives you six possible options to do this correctly! The white line in the picture above indicates the projected outer edge of the flighting. Perfect timing may not be possible, advance to the next hexagon position. Grain flow “ahead” is better than being “behind”. Engage the hex shaft and socket. Install the hardware (red arrows) that secures the two flighting weldments to the double constant velocity universal joint and its connecting tube and hex shaft. Turn the flightings to insure smooth operation and adequate clearance. Tighten fasteners.

Step 7



Turn and align the inclined auger tube to the hopper so that the inspection cover plate is on top (green arrow). Attach the hopper assembly to the incline auger tube using six 7/16 x 1 inch serrated flange bolts and nuts (8 inch auger). 1/2 x 1 inch serrated flanged bolts and nuts (10 and 13 inch augers).

Step 8

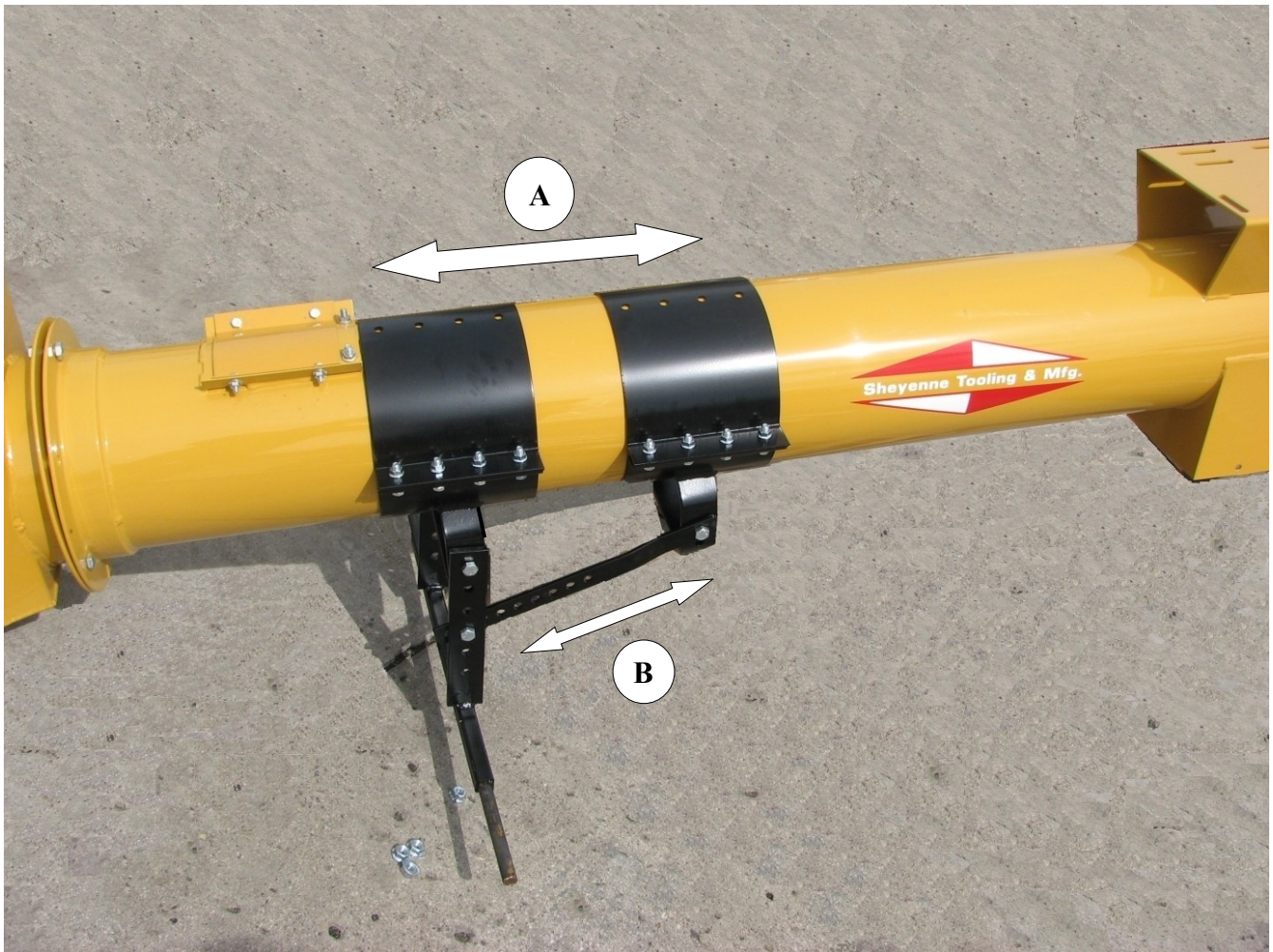


Sub-assemble the wheels using 3/4 x 5 inch bolts and lock nuts. Install the hopper wheels into the lower set of holes on the hopper wheel brackets, then tighten the 3/4 inch lock nuts. Note: The lower set of mounting holes is the standard hopper wheel setting. If a lower position is required, the upper set of holes may be used but ground clearance is reduced.

Step 9



Assemble the caddy or transport as shown in the picture above. Hardware is included in the hardware bag. Note the larger support arm is positioned toward the hopper (white arrow). Multiple holes in the arms provide a wide range of assembly options. When all assembly is completed, including the drive motor (electric or hydraulic), weight balance can be determined. Move the bands up or down (red arrows) the tube to achieve the best balance when pulling down on the upper end of the auger. Weight balance is important for mobility. The above picture is of an 8 inch jump auger.



CADDY BRACKET(S) ASSEMBLY AND PLACEMENT

The above photograph shows the caddy brackets and associated pieces assembled.

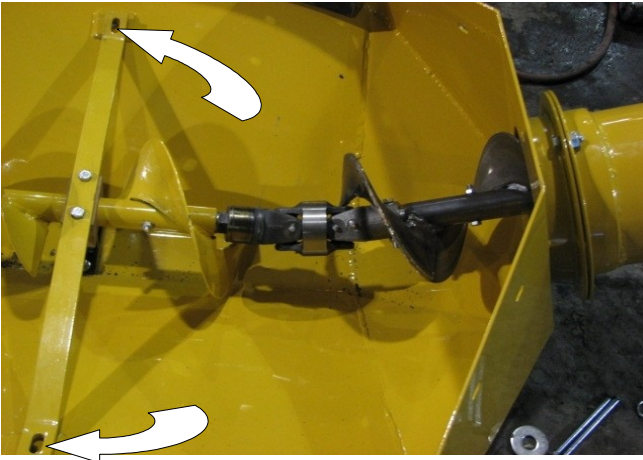
The weight and balance of the jump auger can vary considerably. The choice of drive system, be it electric or hydraulic and the size of the motor are the main factors. Placement of these brackets as indicated by arrows marked “A” and the adjustment arrows marked “B” give the owner or operator plenty of options to position this assembly in the best possible location on the tube. The operator should be able to push down on the handle at the top end of the auger (see picture on page 2) and transfer the weight of the whole unit to the wheels. When this balance is achieved, tighten down all the bolts on the brackets. Transfer the weight to the wheels, push and turn the jump auger into position. Inversely, transfer the weight and pull the auger out of the way.

Step 10



Drill two holes in the rubber flap and install the reinforcing rod.

Step 11



If mounting bolts have been install in these straps, they will need to be removed, retained and reinstall when the hopper safety mesh is assembled.

Step 12



Position the hopper safety mesh in the hopper. Loosely assemble the seven bolt seen in Step 12.

Step 13



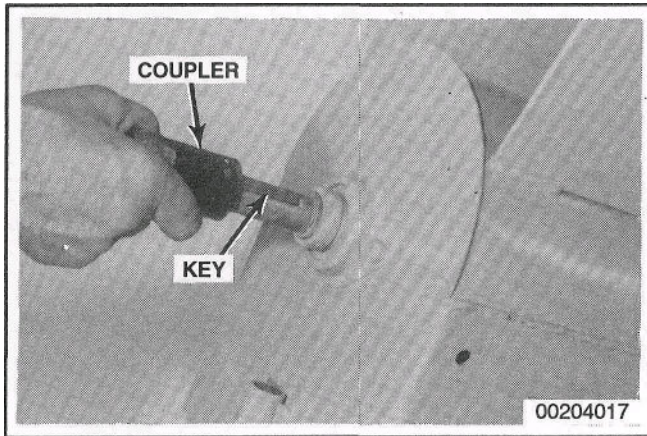
Install the four 3/8 x 1-1/4 through the mesh mounting straps, the bearing straps and the hopper bottom. When all bolts and nuts are assembled in their respective holes, then tighten all.



Completed hopper.

HYDRAULIC MOTOR MOUNT ASSEMBLY INSTRUCTIONS

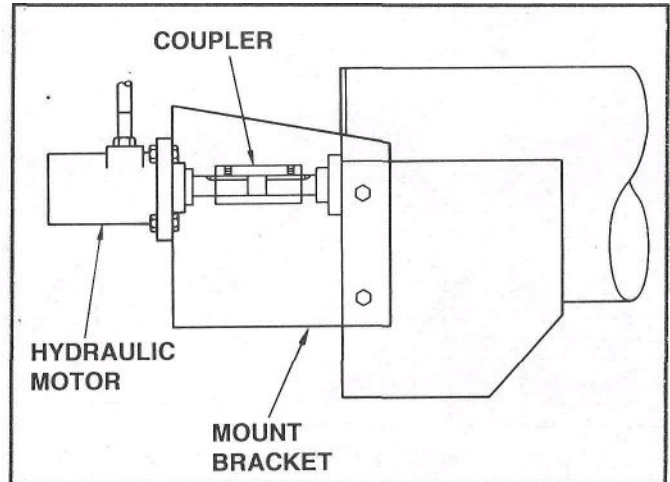
STEP 1



Install the hydraulic motor coupler with 1/4x 1/4x2-1/2 inch key on the end of the auger shaft. Secure the coupler to the shaft using two 5/16x5/16 inch socket set screws.

NOTE: Center the key in the coupler

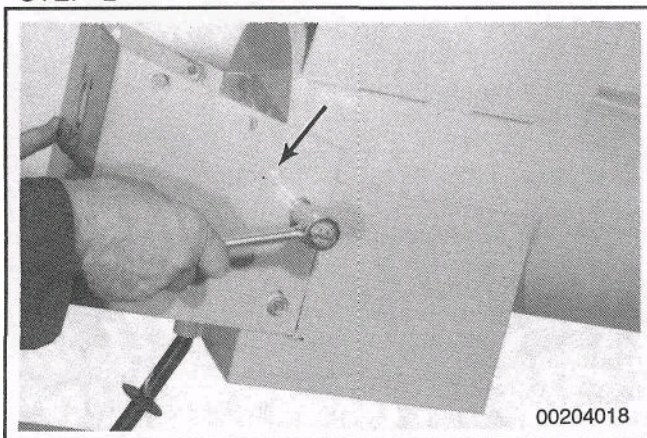
STEP 3



If the hydraulic motor is to be mounted at this time, use four 3/8 x 1 serrated flange bolts to mount the motor. Secure the coupler to the motor shaft with two 5/16 x 5/16 NC socket set screws. Use the 1/4 x 1 woodruff key supplied with motor.

NOTE: Tighten the four mounting bracket bolts.

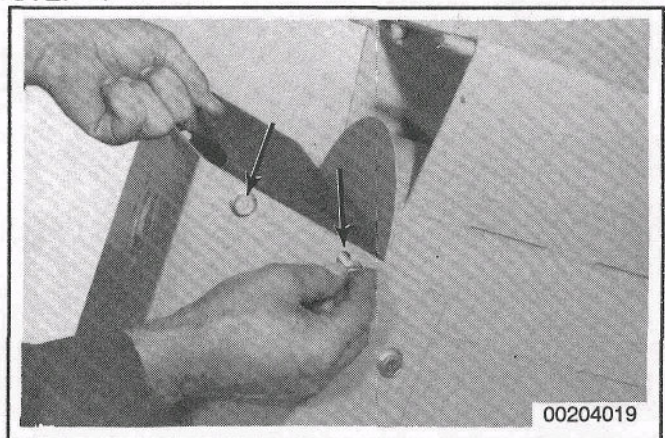
STEP 2



Attach the hydraulic motor mounting bracket to the auger head assembly using four 3/8 x 3/4 inch serrated flange bolts and nuts.

IMPORTANT: Do not tighten the bracket mounting bolts until the hydraulic drive motor is mounted on the bracket and connected to the auger shaft. This will allow the bracket to move and align the hydraulic motor axially with the auger shaft.

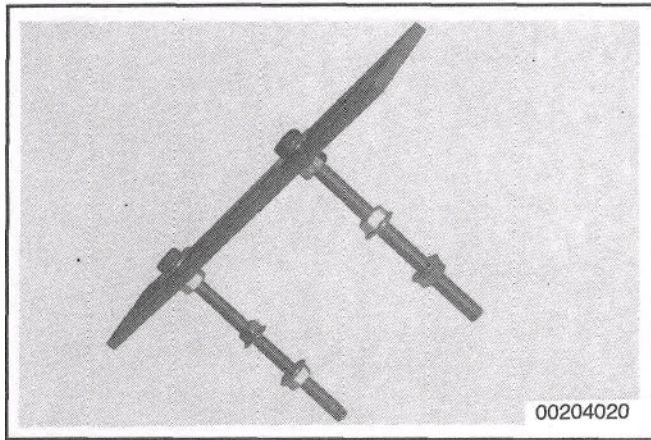
STEP 4



Assemble the top brace for the motor mount bracket using four 3/8 x 3/4 NC serrated flange bolts and nuts.

ELECTRIC MOTOR MOUNT ASSEMBLY INSTRUCTIONS

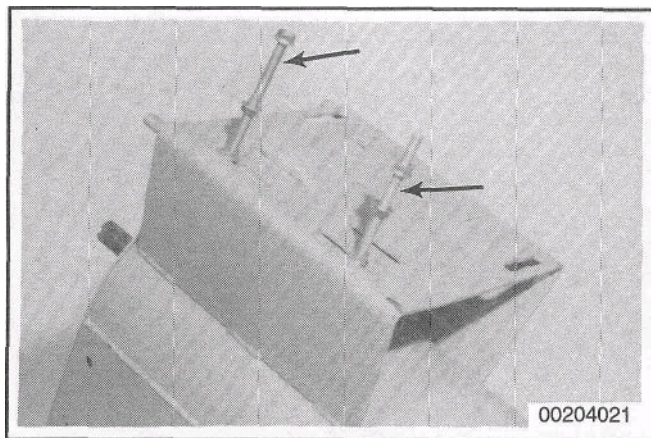
STEP 1



Assemble two 3/8 NC x 5 full thread motor adjustment hex bolts to the motor strap as shown. Put 3/8 flat washers next to the bolt head. Secure the bolts to the mount plate using 3/8 NC serrated nuts.

NOTE: Use two additional 3/8 NC serrated flange nuts on each bolt as shown.

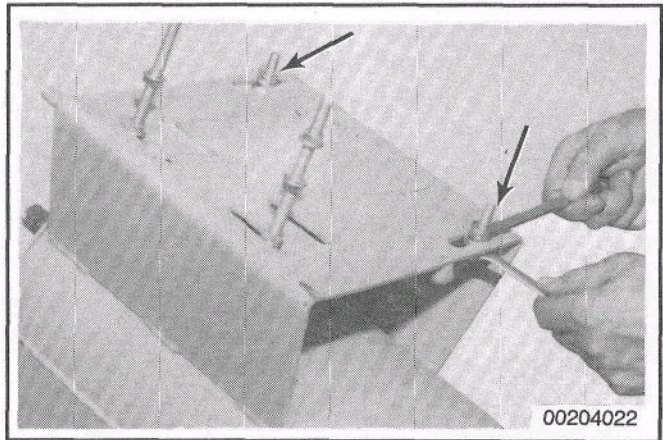
STEP 2



In the same manner, assemble two 3/8 NC x 5 full thread motor adjustments bolts with flat washers in the slotted vertical holes of the motor mount base. Use two additional 3/8 NC serrated flange nuts on each bolt as shown.

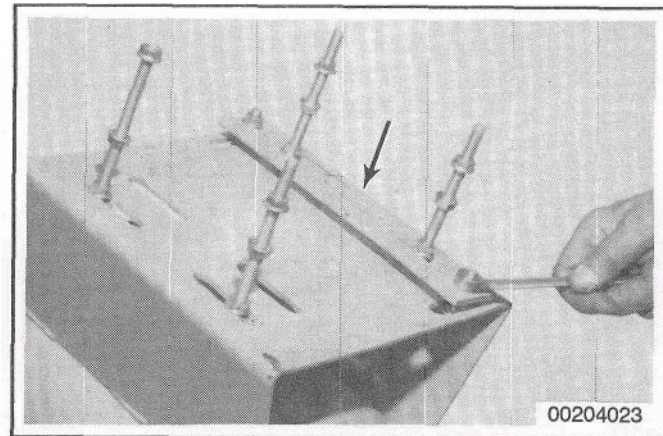
NOTE: For smaller motors use the inside set of slotted holes. For larger motors use the outside set of slotted holes.

STEP 3



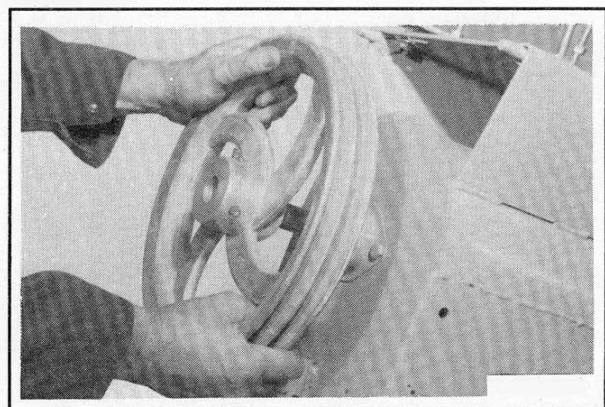
Install a 3/8 NC x 1-1/2 hex bolt with a flat washer next to the bolt head, in each of the two horizontal slotted holes for attaching the mounting strap. Retain the bolts with 3/8 NC serrated flange nuts.

STEP 4



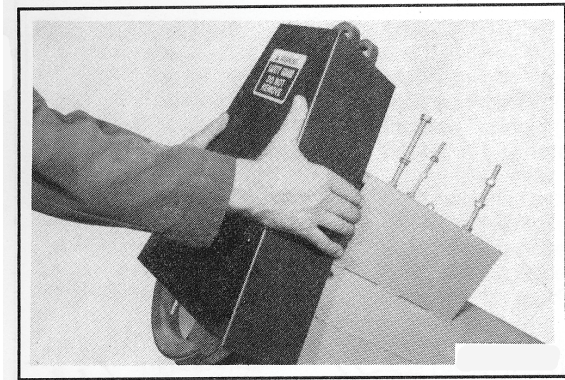
Install the motor mount strap assembly to the motor mount base using 3/8 NC serrated flange nuts.

STEP 5

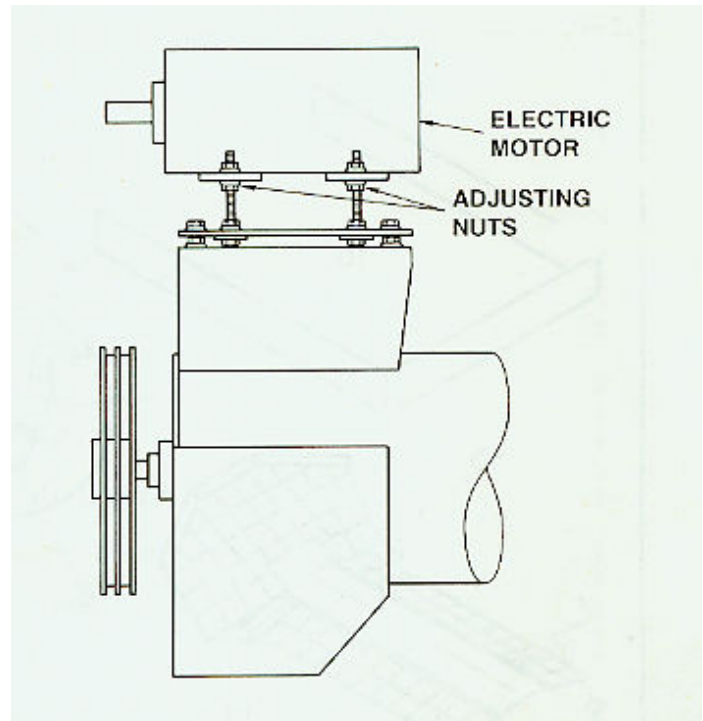


Slide the 12 inch O.D. double groove pulley on the end of the auger shaft. Secure the pulley to the shaft with a 1/4 x 1/4 x 2-1/2 inch key and two 3/8 x 3/8 NC socket set screws.

STEP 6



Install the matched set of belts on the pulley shield to the motor mount studs and secure with two ½ NC serrated flange nuts.



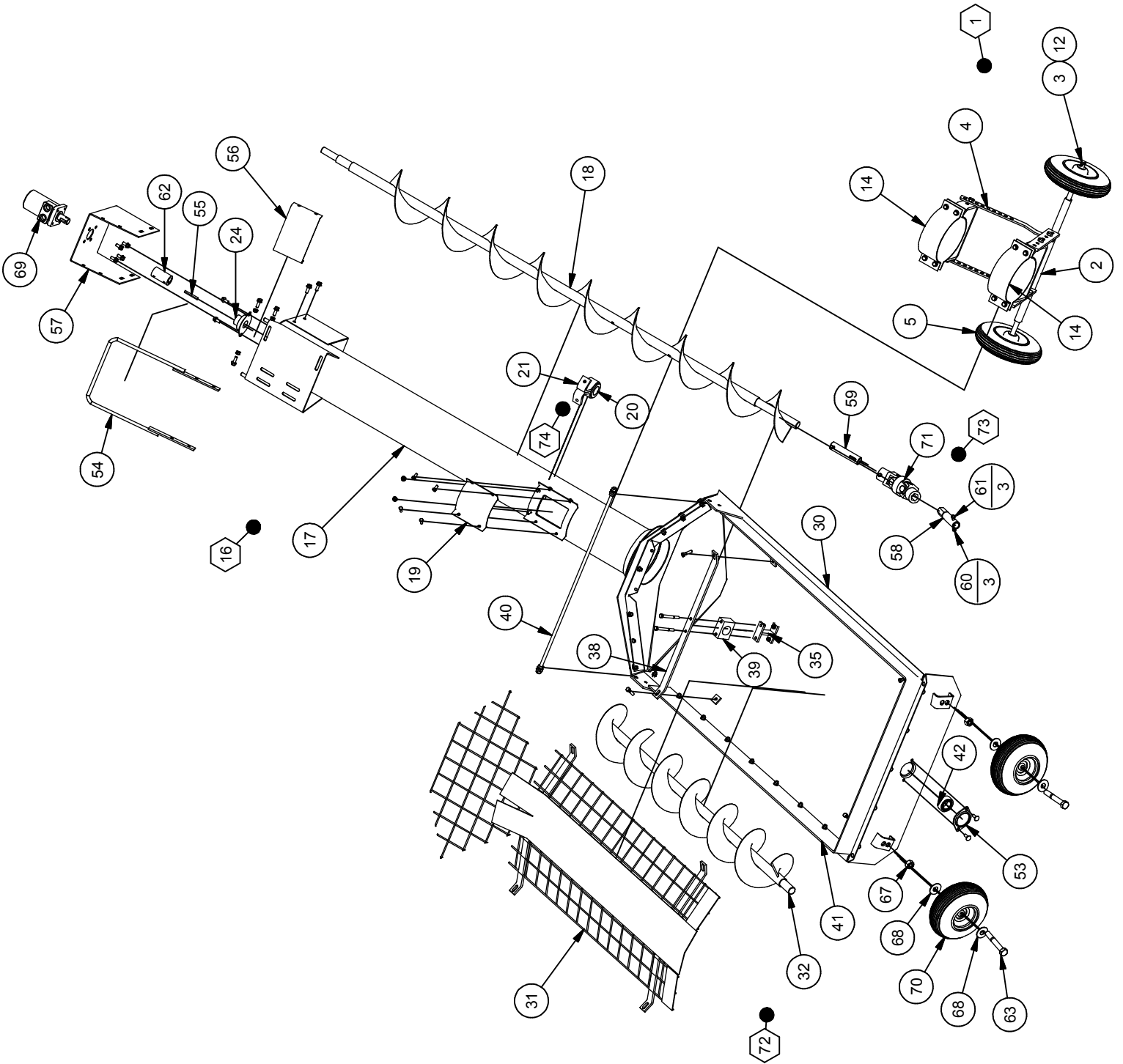
NOTE: When the electric motor is mounted, use the set of slots which most accurately center the motor. Position the motor base between the two serrated flange nuts. Use the lower flange nut for tightening the belts and leveling the motor as close as possible to assure pulley and belt alignment.

PARTS SECTION

TABLE OF CONTENTS

SECTION(S)	DESCRIPTION	PAGE
	8 Inch Exploded View	22
	8 Inch Parts List	23
	10 Inch Exploded View	24
	10 Inch Parts List	25
	13 Inch Exploded View	26
	13 Inch Parts List	27
	Hydraulic Drive Components	28
	Electric Drive Components	29
	Hydraulic Motor Components	30
	Hardware Part Numbers	31
	General Part Number Index	32 & 33

8"

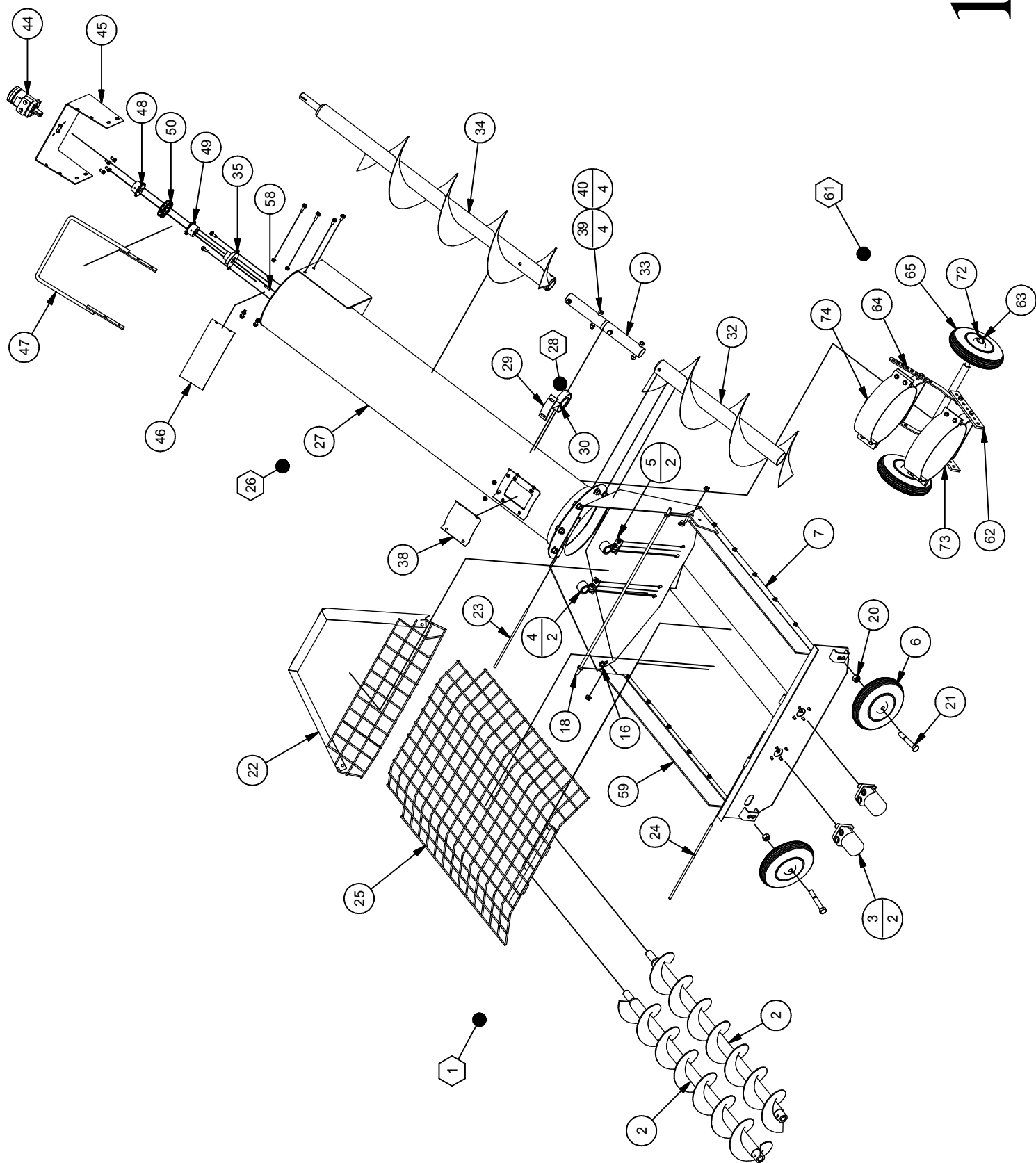


Parts List				Parts List			
ITEM	QTY	PART NUMBER	DESCRIPTION	ITEM	QTY	PART NUMBER	DESCRIPTION
1	1	100-1-0827	8" CADDY KIT, JUMP AUGER	44	4	900-01113	3/8NC X 1-1/2 HEX BOLT G5
2	1	100-2-3034	AXLE TUBE AND ADJUSTER W/A	45	2	900-01129	3/8NC X 3-1/2 HEX BOLT GR5
3	1	100-3-2316	SHAFT	46	2	900-01695	3/8-16 X 1 GR 5 CRG BOLT
4	2	100-3-4738	ADJUSTMENT BAR	47	2	900-03436	3/8 X 3/4 SERR FLANGE BOLT GR5
5	2	905-09125	RUBBER WHEEL COMPLETE	48	23	900-03438	3/8-16 x 1 SERR FLG BOLT
6	8	900-03461	3/8 NC X 1-1/2 SERR. FLANGE BOLT	49	38	900-06139	3/8 NC SERR FLANGE NUT
7	8	900-06139	3/8 NC SERR FLANGE NUT	50	4	900-06143	1/2 NC SERR FLANGE NUT
8	2	900-011221	1/2NC X 1 HEX BOLT GR5	51	2	900-06500	3/8 TOPLOCK NUT- UNC
9	4	900-011225	1/2NC X 1-1/2 HEX BOLT G5	52	7	900-11033	3/8 USS FLATWASHER
10	6	900-06504	1/2" NC TOPLOCK NUT	53	2	901-01011	FLANGE, 2 HOLE
11	4	900-11035	1/2" USS FLATWASHER	54	1	100-2-3033	HANDLE, HYD. MODEL ONLY
12	2	900-23043	3/16 X 1-1/2 COTTER PIN	55	1	100-3-0989	KEY, 1/4SQ X 2-1/2
13	2	100-2-3050	HALF CLAMP CADDY MNT, 8"	56	1	100-3-2216	BRACE, 10" HYD MOTOR MOUNT
14	2	100-3-3944	8" HALF BAND	57	1	100-3-2217	HYDRAULIC MOTOR MOUNT, 8"
15	1	100-2-1233	PIVOT PIN WELD	58	1	100-5-1100	HEX CONNECTOR W/A
16	1	100-2-2026	8" INCLINE TUBE ASSY.	59	1	100-5-1202	TUBE, FIXED CONNECTOR
17	1	100-2-2027	8" INCLINE TUBE WELD	60	3	900-01071	5/16-18 X 2-1/2 GR 5 HHCS
18	1	100-2-2029	8" HELICOID, JUMP AUGER	61	3	900-06498	5/16NC HEX TOPLOCK NUT
19	1	100-3-1113	ACCESS COVER	62	1	106-3-0560	COUPLER, 1" LINE SHAFT
20	1	100-3-3762	1-1/2 SPLIT WOOD BRG	63	2	900-01423	3/4-10 X 5 GR 5 HHCS
21	2	100-3-3763	8" HANGER BRG HALF	64	4	900-03436	3/8 X 3/4 SERR FLANGE BOLT GR5
22	3	900-03439	3/8NC X 1-1/4 SERR FLANGE BOLT	65	8	900-03438	3/8-16 x 1 SERR FLG BOLT
23	1	900-06500	3/8 TOPLOCK NUT- UNC	66	8	900-06139	3/8 NC SERR FLANGE NUT
24	1	901-01101	1-1/4 ECONOMOUNT BEARING	67	4	900-06510	3/4 - 10 TOP LOCK HEX NUT
25	4	900-01055	5/16NC X 3/4 HEX BOLT G5	68	4	900-11038	3/4 USS FLAT WASHER
26	4	900-06137	5/16 NC SERR FLANGE NUT	69	1	904-05529	HYD. MOTOR 9.7 CHARLYNN 101-1012
27	2	900-03436	3/8 X 3/4 SERR FLANGE BOLT GR5	70	2	905-09043	TIRE ASSY, HOPPER
28	4	900-06139	3/8 NC SERR FLANGE NUT	71	1	903-18033	CV JOINT, CAT 6RBL
29	1	100-2-2651	HOPPER M/A	72	1	100-2-2651	HOPPER MECH. ASSY.
30	1	100-2-2653	PIT HOPPER WELDMENT	73	1	100-5-0100	CV JOINT KIT
31	1	100-2-2654	HOPPER MESH WELD LONG, 10"	74	1	100-2-2084	SPLIT BEARING ASSY., 8"
32	1	100-2-2656	HOPPER HELICOID W/A				
33	1	100-2-2709	BAR, SPACER				
34	2	100-3-3755	STRAP, HANGER BRG HOPPER				
35	1	100-3-4051	BAR, SPACER				
36	1	100-3-3663A	MESH, HOPPER				
37	1	100-3-3665	ANGLE, MESH				
38	1	100-3-3669	STRAP, BEARING				
39	1	100-3-3675	1-1/2 SPLIT WOOD BEARING				
40	1	100-3-3757	ROD, REINFORCE				
41	1	100-3-3967	RUBBER STRIP, 6" X 148"				
42	1	901-01002	Spherical Roller 62mmx1.25				
43	7	900-01109	3/8-16 X 1 GR 5 HHCS				

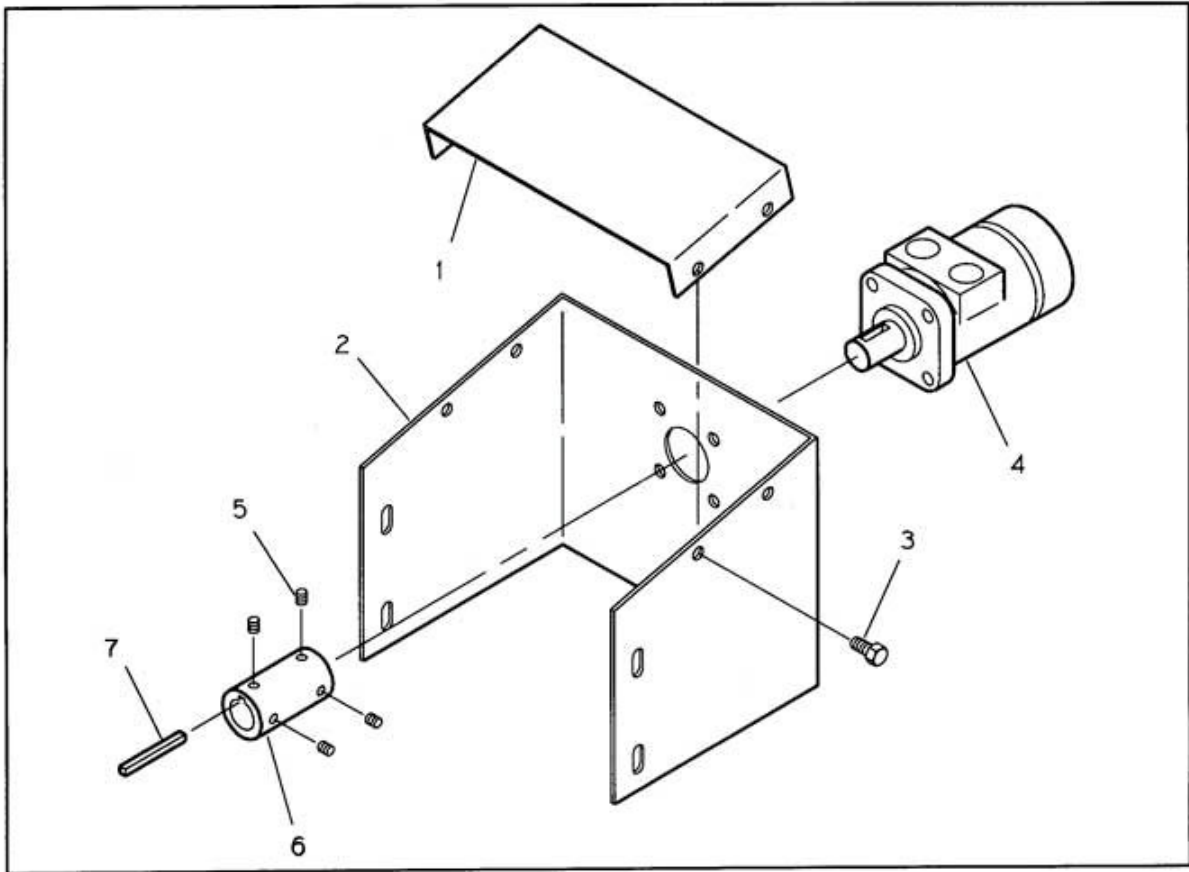
Parts List				Parts List			
ITEM	QTY	PART NUMBER	DESCRIPTION	ITEM	QTY	PART NUMBER	DESCRIPTION
1	1	100-1-0820	10" CADDY KIT, JUMP AUGER	45	1	100-3-3663A	MESH, HOPPER
2	1	100-2-3034	AXLE TUBE AND ADJUSTER W/A	46	1	100-3-3665	ANGLE, MESH
3	2	100-2-3035	HALF CLAMP CADDY MOUNT, 10"	47	1	100-3-3669	STRAP, BEARING
4	1	100-3-2316	SHAFT	48	1	100-3-3675	1-1/2 SPLIT WOOD BEARING
5	2	100-3-3679	10" HALF BAND 4" WIDE	49	1	100-3-3757	ROD, REINFORCE
6	2	100-3-4738	ADJUSTMENT BAR	50	1	100-3-3967	RUBBER STRIP, 6" X 148"
7	2	900-01221	1/2NC X 1 HEX BOLT GR5	51	23	900-01059	5/16NC X 1 HEX BOLT G5
8	4	900-01225	1/2NC X 1-1/2 HEX BOLT G5	52	8	900-01109	3/8-16 X 1 GR 5 HHCS
9	8	900-03461	3/8 NC X 1-1/2 SERR. FLANGE BOLT	53	4	900-01113	3/8NC X 1-1/2 HEX BOLT G5
10	8	900-06139	3/8 NC SERR FLANGE NUT	54	2	900-01129	3/8NC X 3-1/2 HEX BOLT GR5
11	6	900-06504	1/2" NC TOPLOCK NUT	55	2	900-01423	3/4-10 X 5 GR 5 HHCS
12	4	900-11035	1/2" USS FLATWASHER	56	2	900-01695	3/8-16 X 1 GR 5 CRG BOLT
13	2	900-23043	3/16 X 1-1/2 COTTER PIN	57	2	900-03436	3/8 X 3/4 SERR FLANGE BOLT GR5
14	2	905-09125	RUBBER WHEEL COMPLETE	58	23	900-06137	5/16 NC SERR FLANGE NUT
15	1	100-2-1233	PIVOT PIN WELD	59	13	900-06139	3/8 NC SERR FLANGE NUT
16	1	100-2-2083	INCLINE TUBE ASSY.	60	4	900-06143	1/2 NC SERR FLANGE NUT
17	1	100-2-2025	INCLINED TUBE W/A	61	2	900-06500	3/8 TOPLOCK NUT- UNC
18	1	100-2-2081	INCLINE HELICOID W/A	62	4	900-06510	3/4 - 10 TOP LOCK HEX NUT
19	1	100-2-2085	2" SPLT HNGR BRG ASSY	63	8	900-11033	3/8 USS FLATWASHER
20	1	100-3-3764	2" SPLIT WOOD BEARING	64	1	901-01002	Sherical Roller 62mmx1.25
21	2	100-3-3765	10" HANGER BRG HALF	65	2	901-01011	FLANGE, 2 HOLE
22	1	900-03439	3/8NC X 1-1/4 SERR FLANGE BOLT	66	1	100-2-3033	HANDLE; HYD. MODEL ONLY
23	1	900-06500	3/8 TOPLOCK NUT- UNC	67	1	100-3-0989	KEY, 1/4SQ X 2-1/2
24	1	100-3-1113	ACCESS COVER	68	1	100-3-2325	BRACE, SWING HOPPER
25	4	900-01055	5/16NC X 3/4 HEX BOLT GR5	69	1	100-3-2331	HYD. MOTOR MOUNT, 10"
26	2	900-03436	3/8 X 3/4 SERR FLANGE BOLT GR5	70	2	100-3-3228	10" HALF BAND 2"WIDE
27	2	900-03439	3/8NC X 1-1/4 SERR FLANGE BOLT	71	1	100-5-0100	CV JOINT KIT
28	4	900-06137	5/16 NC SERR FLANGE NUT	72	1	100-5-1100	HEX CONNECTOR W/A
29	4	900-06139	3/8 NC SERR FLANGE NUT	73	1	100-5-1202	TUBE, FIXED CONNECTOR
30	1	901-01101	1-1/4 ECONOMOUNT BEARING	74	3	900-01071	5/16-18 X 2-1/2 GR 5 HHCS
31	1	100-2-2650	HOPPER M/A	75	3	900-06498	5/16NC HEX TOPLOCK NUT
32	1	100-2-2652	HOPPER WELD LONG, 10"	76	1	106-3-0560	COUPLER, 1" LINE SHAFT
33	2	100-3-3654	GUSSET, CORNER	77	4	900-03436	3/8 X 3/4 SERR FLANGE BOLT GR5
34	1	100-3-3656	ENDPLATE, HOPPER-FORMED	78	8	900-03438	3/8-16 x 1 SERR FLG BOLT
35	1	100-3-3658	PLATE, TOP TRANSITION	79	2	900-03439	3/8NC X 1-1/4 SERR FLANGE BOLT
36	1	100-3-3659	BTM TRANSITION	80	10	900-06139	3/8 NC SERR FLANGE NUT
37	4	100-3-3739	TAB, SPACER	81	4	900-11038	3/4 USS FLAT WASHER
38	2	100-3-3772	WHEEL MOUNT, HOPPER	82	1	903-18033	CV JOINT CAT 1 6RBL
39	2	100-3-3962	STRAP, SIDE-LONG	83	1	904-05529	HYD. MOTOR 9.7 CHARLYNN 101-1012
40	1	100-3-3964	HOPPER BOTTOM	84	2	905-09043	TIRE ASSY, HOPPER
41	1	106-3-0307	10" ANGLE RING	85	1	100-5-0100	CV JOINT KIT
42	1	100-2-2654	HOPPER MESH WELD LONG, 10"	86	1	100-2-2085	SPLIT BEARING ASSY., 10"
43	1	100-2-2656	HOPPER HELICOID W/A				
44	1	100-2-2709	BAR, SPACER				

10"

13"

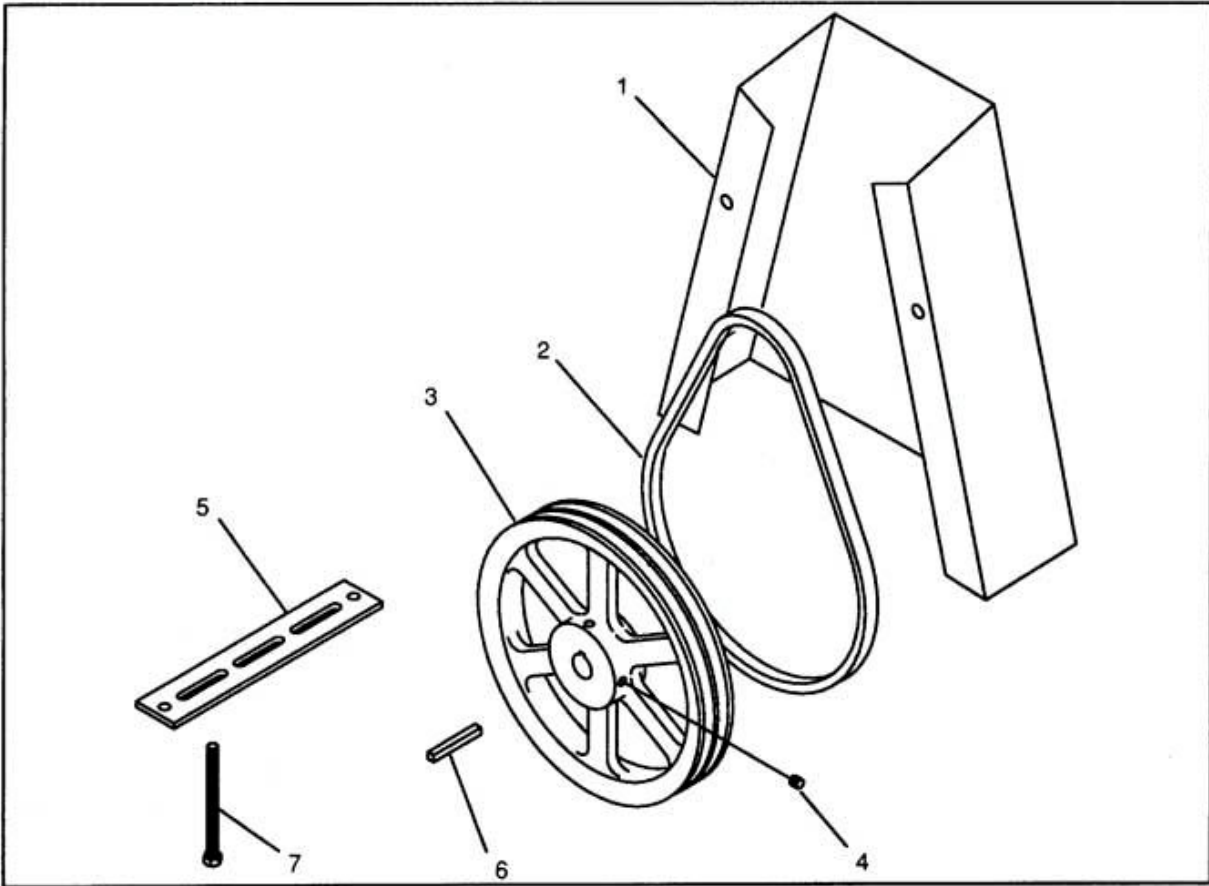


Parts List				Parts List			
ITEM	QTY	PART NUMBER	DESCRIPTION	ITEM	QTY	PART NUMBER	DESCRIPTION
1	1	100-2-3094A	HOPPER ASSY, 13" SW HOPPER	42	4	900-01055	5/16NC X 3/4 HEX BOLT G5
2	2	100-2-3096	HELICOID W/A, 13" HOPPER	43	4	900-06137	5/16 NC SERR FLANGE NUT
3	2	904-05302	HYD. MOTOR CHAR LYNN 101-1857	44	1	904-05003	101-1003 HYD MOTOR
4	2	100-2-3101	BUSHING W/A	45	1	100-3-4880	HYD MOTOR MNT 13" SW HOPPER
5	2	100-2-3100	MOUNT W/A, BUSHING	46	1	100-3-4883	BRACE, MOTOR MOUNT
6	2	905-09125	RUBBER WHEEL COMPLETE	47	1	100-2-3098	HANDLE WELDMENT
7	1	100-2-3103	13" HOPPER WELD	48	1	903-05039	COUPLER SPROCKET, 1" 6012
8	2	100-3-4903	PIN, UPPER MESH LOCATING	49	1	903-05040	COUPLER SPROCKET, 1-1/4 6012
9	8	900-01105	3/8-16 X 3/4 GR 5 HHCS	50	1	903-03127	CHAIN, CONNECTOR
10	8	900-11011	3/8 LOCKWASHER	51	4	900-03439	3/8NC X 1-1/4 SERR FLANGE BOLT
11	2	900-01121	3/8 NC X 2.5 HEX BOLT G5	52	4	900-03436	3/8 X 3/4 SERR FLANGE BOLT GR5
12	2	900-06500	3/8 TOPLOCK NUT- UNC	53	20	900-06139	3/8 NC SERR FLANGE NUT
13	4	900-03438	3/8-16 x 1 SERR FLG BOLT	54	8	900-01339	5/8-11 X 1-1/4 GR 5 HHCS
14	6	900-06139	3/8 NC SERR FLANGE NUT	55	8	900-06145	5/8NC SERR FLANGE NUT
15	2	900-11033	3/8 USS FLATWASHER	56	4	900-01105	3/8-16 X 3/4 GR 5 HHCS
16	2	900-23023	COTTER PIN, 1/8 X 3/4	57	4	900-11011	3/8 LOCKWASHER
17	2	900-03439	3/8NC X 1-1/4 SERR FLANGE BOLT	58	1	900-27033	1/4 X 1-1/4 WOODRUFF KEY #810
18	1	100-3-4904	ROD, HOPPER SUPPORT	59	2	100-3-4906	RUBBER FLAP, 6X40.25"
19	4	900-06143	1/2 NC SERR FLANGE NUT	60	12	900-03438	3/8-16 x 1 SERR FLG BOLT
20	4	900-06510	3/4 - 10 TOP LOCK HEX NUT	61	1	100-1-0834	13" CADDY KIT, JUMP AUGER
21	2	900-01423	3/4-10 X 5 GR 5 HHCS	62	1	100-2-3034	AXLE TUBE AND ADJUSTER W/A
22	1	100-2-3097	HOPPER MESH WELD, UPPER	63	1	100-3-2316	SHAFT
23	1	100-3-4901	PIN, UPPER MESH	64	2	100-3-4738	ADJUSTMENT BAR
24	1	100-3-4902	PIN, LOWER MESH	65	2	905-09125	RUBBER WHEEL COMPLETE
25	1	100-2-3966	HOPPER MESH WELD, LOWER	66	8	900-03461	3/8 NC X 1-1/2 SERR. FLANGE BOLT
26	1	100-2-3091	INCL. TUBE ASSY, 13" SW HOPPER	67	8	900-06139	3/8 NC SERR FLANGE NUT
27	1	100-2-3092	INCLINE TUBE WELD 13" SW HOPPER	68	2	900-01221	1/2NC X 1 HEX BOLT GR5
28	1	106-2-0711	13" HANGER BEARING ASSY	69	4	900-01225	1/2NC X 1-1/2 HEX BOLT G5
29	1	106-2-0710	13" HANGER BRG SUBWELD	70	6	900-06504	1/2" NC TOPLOCK NUT
30	1	901-01079	2" INSERT BEARING	71	4	900-11035	1/2" USS FLATWASHER
31	1	900-11129	2-1/2 WIDE RIM MACH BUSHING	72	2	900-23043	3/16 X 1-1/2 COTTER PIN
32	1	100-2-2671	INTAKE HELICOID	73	2	100-2-3099	CADDY TUBE MOUNT WELD, 13"
33	1	100-3-4000	CONNECTOR SHAFT	74	2	100-3-4272	HALF BAND, 13 X 4
34	1	100-2-3093	INCLINE TUBE HELICOID WELDMENT				
35	1	901-01101	1-1/4 ECONOMOUNT BEARING				
36	2	900-03436	3/8 X 3/4 SERR FLANGE BOLT GR5				
37	4	900-06139	3/8 NC SERR FLANGE NUT				
38	1	100-3-1113	COVER, ACCESS 13"				
39	4	900-01241	1/2-13 x 3-1/2 GR 5 HHCS				
40	4	900-06504	1/2" NC TOPLOCK NUT				
41	2	900-03439	3/8NC X 1-1/4 SERR FLANGE BOLT				



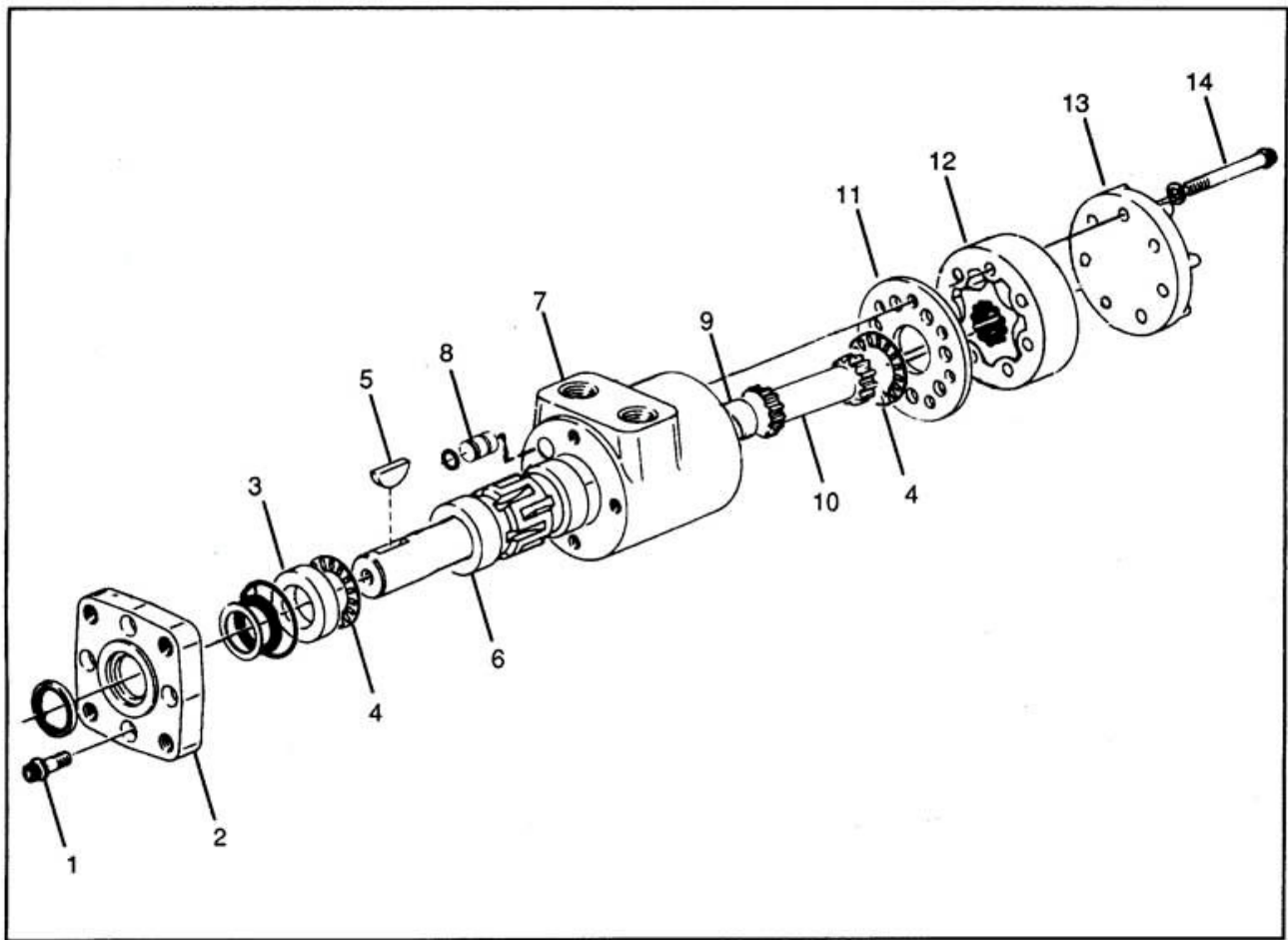
HYDRAULIC DRIVE COMPONENTS

REF.	PART NO.	DESCRIPTION	QTY.
1	100-3-2325	Brace (10")	1
	100-3-2216	Brace (8")	1
2	100-3-2331	Motor Mount (10")	1
	100-3-2217	Motor Mount (8")	1
3	900-03436	3/8 x 3/4 Serrated Flanged Bolt	8
4	904-05003	Hydraulic Motor (See Page 30)	1
5	900-16237	5/16 x 5/16 Socket Set Screw	4
6	106-3-0560	1" Coupler	1
7	100-3-0989	Key, 1/4 x 1/4 x 2-1/2	1



ELECTRIC DRIVE COMPONENTS

REF.	PART NO.	DESCRIPTION	QTY.
1	100-3-2219	Shield	1
2	903-01312	BX-56V-Belt(10")	2
	903-01090	B-48 V-Belt (8")	2
3	903-07980	12" Double Groove Alum. Pulley	1
4	900-16251	3/8 x 3/8 Socket Set Screw	2
5	106-3-1348	Motor Mount Strap	1
6	100-3-0989	Key, 1/4x1/4x2-1/2	1
7	900-03031	3/8 x 5 Hex Bolt (Full Thread)	4



HYDRAULIC MOTOR (Char-Lynn)

REF.	PART NO.	DESCRIPTION	QTY.
1	904-05032	Screw, Cap 12 pt. Dr. 5/16-24 UNF x 7/8 #5777	4
2	904-05167	Flange, Mounting (4 Bolt) #843	1
3	901-01071	Bearing Race #7462	1
4	901-01072	Thrust Needle Bearing #7537	2
5	900-27024	Key, Woodruff	1
6		Output Shaft #5367	1
7	905-05194	Housing, 1/2" NPTF Ports #6305-2	1
8	904-05030	Plug, Housing #8985	1
9		Spacer(included with output shaft) #5662	1
10	904-05023	Drive #616	1
11	904-05196	Plate, Spacer #5414	1
12	904-05193	GerotorSet #5387-3	1
13	904-05195	Cap, End #6481	1
14	904-05031	Screw, Cap 12 pt. Dr. 5/16-24 UNF #60505	7
	904-05052	Seal Kit #60036	1
	904-05003	Hydraulic Motor, Complete	1

HARDWARE

<u>NUTS</u>		<u>WASHERS</u>	
<u>PART NO.</u>	<u>DESCRIPTION</u>	<u>PART NO.</u>	<u>DESCRIPTION</u>
900-06194	3/16 NC Hex Nut	900-11007	3/16 Lock Washer
900-06001	1/4 NC Hex Nut	900-11009	1/4 Lock Washer
900-06003	5/16 NC Hex Nut	900-11010	5/16 Lock Washer
900-06005	3/8 NC Hex Nut	900-11011	3/8 Lock Washer
900-06007	7/16 NC Hex Nut	900-11012	7/16 Lock Washer
900-06009	1/2 NC Hex Nut	900-11013	1/2 Lock Washer
900-06010	1/2 NF Hex Nut	900-11014	9/16 Lock Washer
900-06011	9/16 NC Hex Nut	900-11015	5/8 Lock Washer
900-06013	5/8 NC Hex Nut	900-11017	3/4 Lock Washer
900-06015	3/4 NC Hex Nut	900-11019	7/8 Lock Washer
900-06017	7/8 NC Hex Nut	900-11021	1" Lock Washer
900-06019	1" NC Hex Nut	900-11023	1-1/8 Lock Washer
900-06023	1-1/4 NC Hex Nut	900-11025	1-1/4 Lock Washer
900-06025	1-3/8 NC Hex Nut	900-11029	1-1/2 Lock Washer
900-06027	1-1/2 NC Hex Nut		
		900-11030	3/16 Flat Washer
900-06056	5/8 NF Slotted Hex Nut	900-11031	1/4 Flat Washer
900-06058	3/4 NF Slotted Hex Nut	900-11032	5/16 Flat Washer
900-06060	7/8 NF Slotted Hex Nut	900-11033	3/8 Flat Washer
900-06062	1" NF Slotted Hex Nut	900-11034	7/16 Flat Washer
900-06065	1-1/4 NC Slotted Hex Nut	900-11035	1/2 Flat Washer
900-06066	1-1/4 NF Slotted Hex Nut	900-11036	9/16 Flat Washer
900-06070	1-1/2 NF Slotted Hex Nut	900-11037	5/8 Flat Washer
		900-11038	3/4 Flat Washer
900-06135	1/4 NC Flanged Whiz Lock Nut	900-11039	7/8 Flat Washer
900-06137	5/16 NC Flanged Whiz Lock Nut	900-11040	1" Flat Washer
900-06139	3/8 NC Flanged Whiz Lock Nut	900-11041	1-1/8 Flat Washer
900-06141	7/16 NC Flanged Whiz Lock Nut	900-11042	1-1/4 Flat Washer
900-06143	1/2 NC Flanged Whiz Lock Nut	900-11044	1-1/2 Flat Washer
900-06145	5/8 NC Flanged Whiz Lock Nut		
900-06270	3/8 NC Jam Nut		
900-06276	1/2 NC Jam Nut		
900-06280	5/8 NC Jam Nut		
900-06282	3/4 NC Jam Nut		
900-06284	7/8 NC Jam Nut		
900-06286	1" NC Jam Nut		
900-06288	1-1/8 NC Jam Nut		
900-06292	1-3/8 NC Jam Nut		
900-06496	1/4 NC Top Lock Nut		
900-06498	5/16 NC Top Lock Nut		
900-06500	3/8 NC Top Lock Nut		
900-06502	7/16 NC Top Lock Nut		
900-06504	1/2 NC Top Lock Nut		
900-06508	5/8 NC Top Lock Nut		
900-06510	3/4 NC Top Lock Nut		
900-06512	7/8 NC Top Lock Nut		
900-06514	1" NC Top Lock Nut		
900-06518	1-1/4 NC Top Lock Nut		

INDEX

Part Number	Page	Part Number	Page	Part Number	Page
100-1-0820	25	100-2-3101	27	100-3-3765	25
100-1-0827	23	100-2-3103	27	100-3-3944	23
100-1-0834	27	100-2-3966	27	100-3-3964	25
100-2-2025	25	100-3-0989	23	100-3-3967	23
100-2-2026	23	100-3-0989	25	100-3-3967	25
100-2-2027	23	100-3-0989	28	100-3-4000	27
100-2-2029	23	100-3-0989	29	100-3-4051	23
100-2-2081	25	100-3-1113	23	100-3-4272	27
100-2-2083	25	100-3-1113	25	100-3-4738	23
100-2-2084	23	100-3-1113	27	100-3-4738	25
100-2-2085	25	100-3-1367	10	100-3-4738	27
100-2-2650	25	100-3-2216	23	100-3-4880	27
100-2-2651	23	100-3-2216	28	100-3-4883	27
100-2-2653	23	100-3-2217	23	100-3-4901	27
100-2-2654	23	100-3-2217	28	100-3-4902	27
100-2-2654	25	100-3-2219	29	100-3-4904	27
100-2-2656	23	100-3-2316	23	100-3-4906	27
100-2-2656	25	100-3-2316	25	100-5-0100	23
100-2-2671	27	100-3-2316	27	100-5-0100	25
100-2-2709	25	100-3-2325	25	100-5-1100	23
100-2-3033	23	100-3-2325	28	100-5-1100	25
100-2-3033	25	100-3-2331	25	100-5-1202	23
100-2-3034	23	100-3-2331	28	100-5-1202	25
100-2-3034	25	100-3-3228	25	106-2-0710	27
100-2-3034	27	100-3-3593	10	106-2-0711	27
100-2-3035	25	100-3-3669	23	106-3-0560	23
100-2-3091	27	100-3-3669	25	106-3-0560	25
100-2-3092	27	100-3-3675	23	106-3-0560	28
100-2-3093	27	100-3-3675	25	106-3-1348	29
100-2-3094A	27	100-3-3679	25	300-3-1103	10
100-2-3096	27	100-3-3757	23	900-01071	23
100-2-3097	27	100-3-3757	25	900-01071	25
100-2-3098	27	100-3-3762	23	900-01241	27
100-2-3099	27	100-3-3763	23	900-01423	23
100-2-3100	27	100-3-3764	25	900-01423	25

INDEX

Part Number	Page	Part Number	Page
900-01423	27	903-18033	25
900-03031	29	904-05003	27
900-03436	28	904-05003	28
900-06498	23	904-05003	30
900-06498	25	904-05023	30
900-06504	27	904-05030	30
900-06510	23	904-05031	30
900-06510	25	904-05032	30
900-06510	27	904-05052	30
900-11038	23	904-05167	30
900-11038	25	904-05193	30
900-16237	28	904-05195	30
900-16251	29	904-05196	30
900-23023	27	904-05302	27
900-23043	23	904-05529	23
900-23043	27	904-05529	25
900-27024	30	905-05194	30
900-27033	27	905-09043	23
901-01002	23	905-09043	25
901-01002	25	905-09125	23
901-01011	23	905-09125	27
901-01011	25	905-09125	27
901-01071	30		
901-01072	30		
901-01079	27		
901-01101	23		
901-01101	25		
901-01101	27		
903-01090	29		
903-01312	29		
903-03127	27		
903-05039	27		
903-05040	27		
903-07980	29		
903-18033	23		



701 Lenham Ave. - P.O. Box 647

Cooperstown, ND 58425

Office (701) 797-2700

Fax (701) 797-2584

Toll Free (800) 797-1883

www.sheyennemfg.com